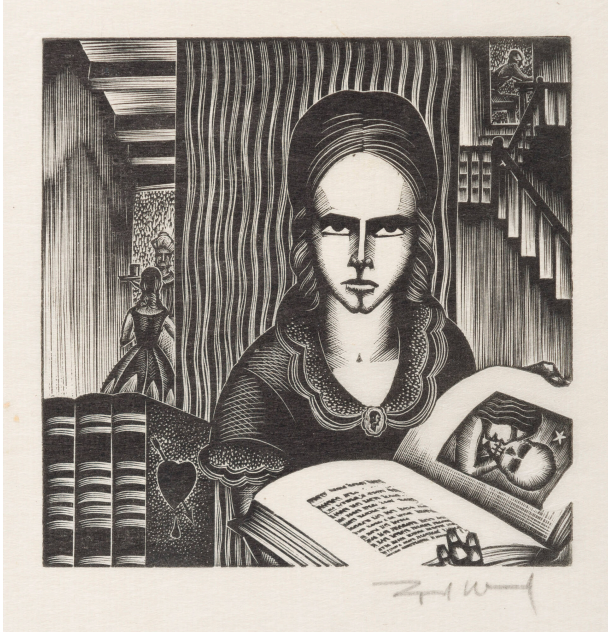


# Basic Detail Report

---



## Untitled, print #70, from "Mad Man's Drum"

### Date

1930

### Primary Maker

Lynd Ward

### Medium

Wood engraving on paper

### Dimensions

Sheet: 9 3/16 × 6 11/16 in. (23.3 × 17 cm) Image: 3 3/4 × 3 3/4 in. (9.5 × 9.5 cm)

### Credit Line

Des Moines Art Center Permanent Collections; Gift of Keith Shaver in honor of Mary and Roy Shaver, 2015.78