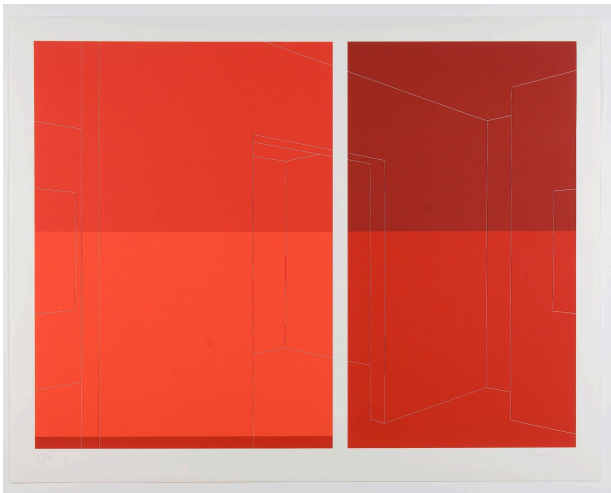


Basic Detail Report



Still Gallery, View Between, 4 Reds, Thread Line

Date

2001

Primary Maker

Kate Shepherd

Medium

Screenprint on museum board

Dimensions

Sheet: 34 3/8 × 43 5/8 in. (87.3 × 110.8 cm) Image: 30 × 40 1/16 in. (76.2 × 101.8 cm)

Credit Line

Des Moines Art Center; Paul and Anastasia Polydoran Collection, 2008.48