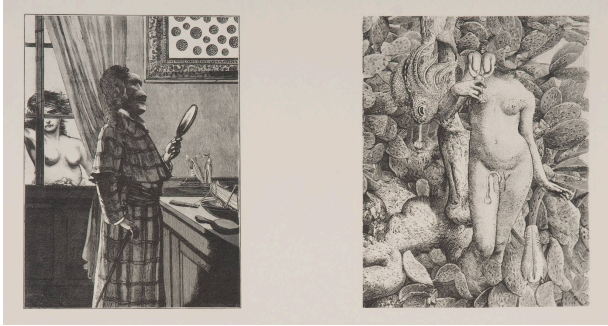


Basic Detail Report



L'interieur de la vue, Premier poème visible 6 (The Interior of Sight, First Visible Poem, 6) from the unbound printer's proof of "Une Semaine de Bonté, Cinquième Cahier (A Week of

Kindness, Fifth Volume)" (recto, left)

Date

1933

Primary Maker

Max Ernst

Medium

Relief-printed photo-etching of collaged 19th century wood engravings on paper

Dimensions

Sheet: 11 1/16 × 17 11/16 in. (28.1 × 44.9 cm) Image (Image a): 6 3/4 × 6 in. (17.1 × 15.2 cm) Image (Image b): 7 11/16 × 5 9/16 in. (19.5 × 14.1 cm) Image (Image c): 7 3/8 × 5 1/2 in. (18.7 × 14 cm) Image (Image d): 7 3/8 × 5 13/16 in. (18.7 × 14.8 cm)

Credit Line

Des Moines Art Center Permanent Collections; Purchased with funds from the Edmundson Art Foundation; Rose F. Rosenfield; Myron and Jacqueline Blank; Julian and Irma Brody; and anonymous gift by exchange, 2009.21.9.a-.d

Description

proof sheet with 4 images