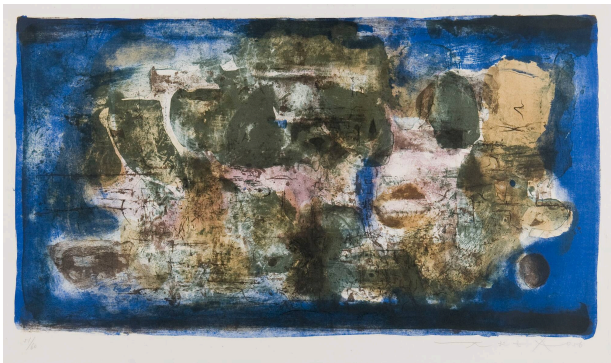


# Basic Detail Report

---



## The Engulfed Village

**Date**

1956

**Primary Maker**

Zao Wou-Ki

**Medium**

Color lithograph on paper

**Dimensions**

Sheet: 20 5/16 × 30 1/4 in. (51.6 × 76.8 cm) Image: 14 5/8 × 26 1/4 in. (37.1 × 66.7 cm)

**Credit Line**

Des Moines Art Center Permanent Collections; Gift of Mr. and Mrs. John Cowles, Jr., 1957.38