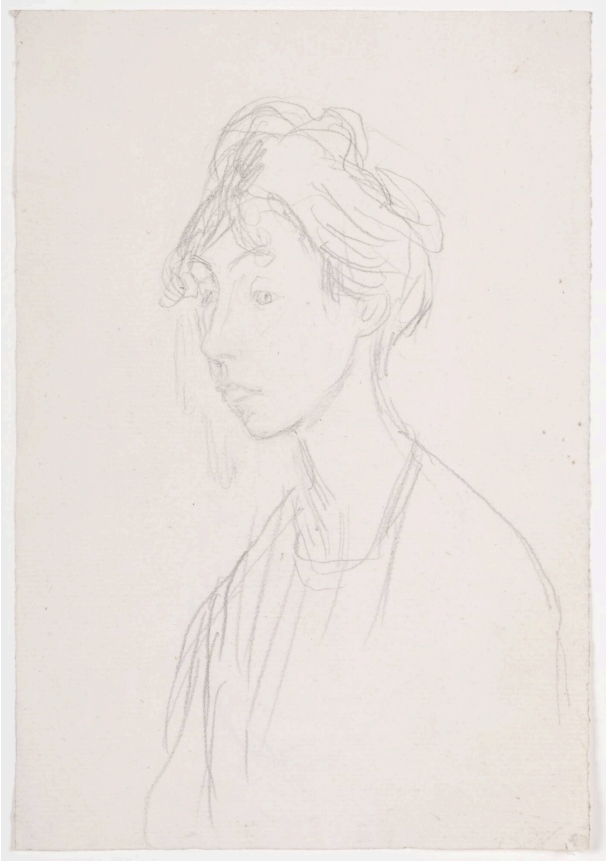


Basic Detail Report



Chloë Boughton-Leigh

Date

ca. 1910

Primary Maker

Gwen John

Medium

Pencil on paper

Dimensions

Sheet (/image): 8 9/16 × 5 7/8 in. (21.7 × 14.9 cm)

Credit Line

Des Moines Art Center's Louise Noun Collection of Art by Women through Bequest, 2003.328