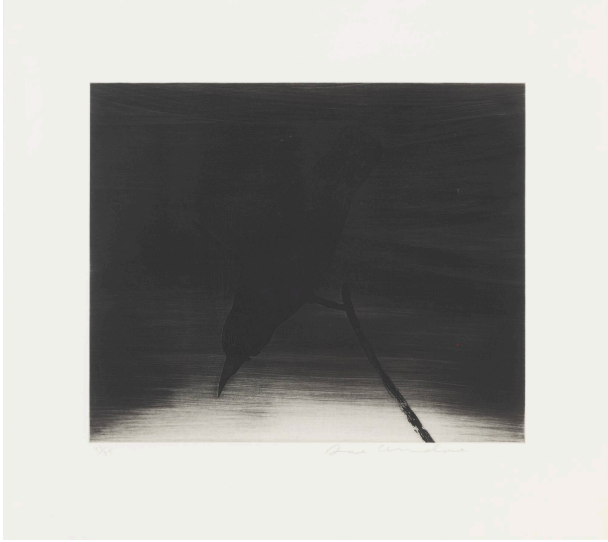


# Basic Detail Report

---



(63.5 x 70.5 x 3.2 cm)

## Crow II

### Date

1996

### Primary Maker

Joe Andoe

### Medium

Aquatint on paper

### Dimensions

Sheet: 22 3/8 x 24 7/8 in. (56.8 x 63.2 cm) Plate: 14 3/4 x 17 7/8 in. (37.5 x 45.4 cm) Frame: 25 x 27 3/4 x 1 1/4 in.

### Credit Line

Des Moines Art Center Permanent Collections; Gift of the Estate of Dale Jansen, 2024.26

### Description

1-color aquatint