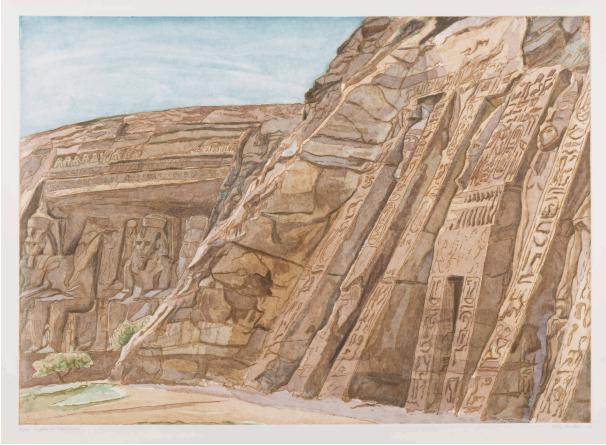


Basic Detail Report



Temples at Abu Simbel, from "Ruins and Landscapes"

Date

1979

Primary Maker

Philip Pearlstein

Medium

Sugar-lift aquatint with roulette work; each print printed

with three plates in colors on white unsized Rives B.F.K. paper

Dimensions

Sheet: 29 3/4 × 39 1/2 in. (75.6 × 100.3 cm) Plate: 23 3/4 × 33 1/2 in. (60.3 × 85.1 cm)

Credit Line

Des Moines Art Center Permanent Collections; Gift of Arthur Brody, 1981.48.1-.5